



DET BYOx

Connecting to BYOx with an OS-X (Mac) Device v2.0



BYOx DET

Connecting with an OS-X Device

This process outlines how staff and students with DET identities can connect to BYOx using an Apple Mac device. Different OS-X versions or devices may vary slightly.

Prerequisites

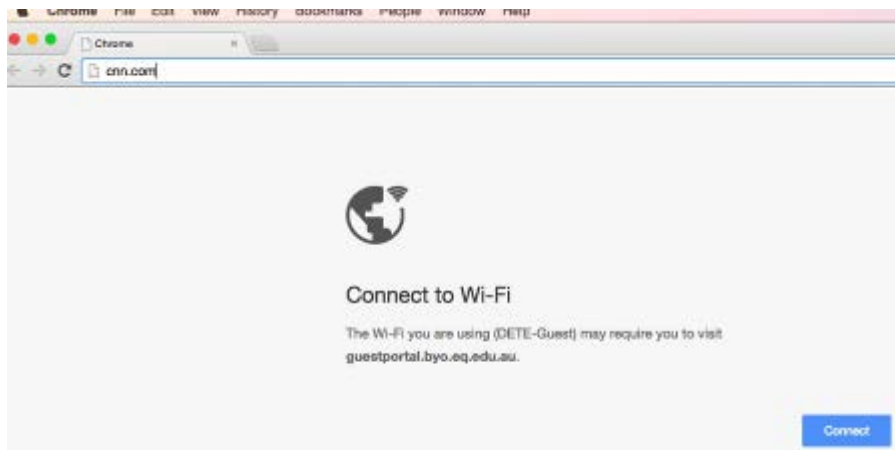
- **Must** be a DET user (i.e. have a DET identity and login details).
- **Must** be added to the Staff or Student Active Directory group (<schoolcode>GG_UsrBYO<Staff/Student>).
- **Must** have an Administrator user account on your MacBook (Installing software in Mac OS-X requires an administrator account name and password.).

Connecting to BYOx network as a Staff member or Student

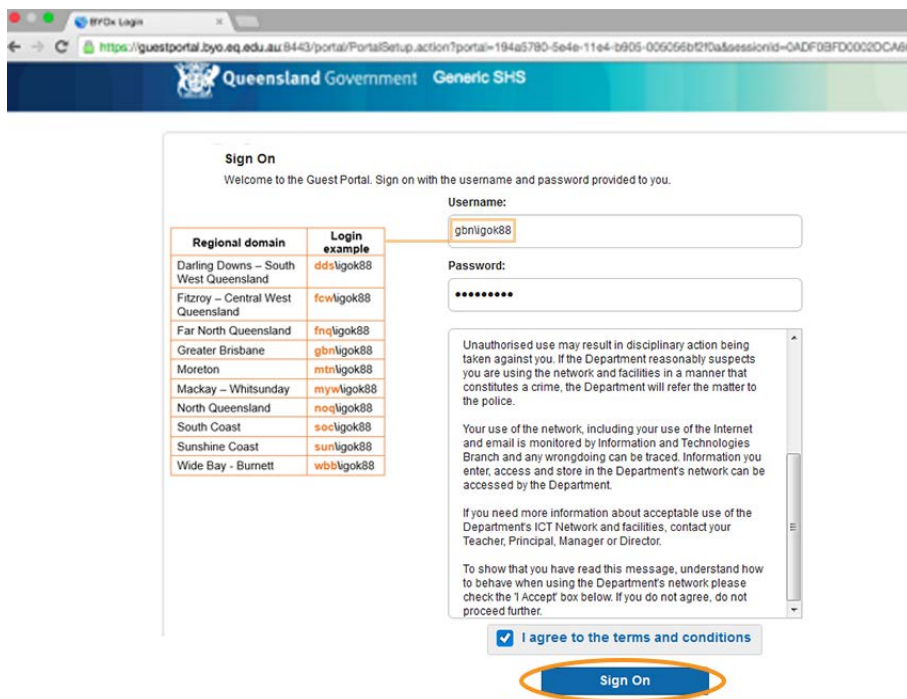
1. Open your wireless settings and select 'DETE-Guest' network, uncheck the 'Automatically join this network' button and select 'Apply'.



2. Open a browser (preferably Google Chrome) and attempt to navigate to a non-https website (i.e. <http://www.cnn.com>).



- You will be redirected to a BYOx login page. Type in your region code\username and password. Read and tick "I agree to the terms and conditions". Then click "Sign On".



- Click "Start" button.



- Type in "Device Name", then click "Continue" button.

Queensland Government Generic SHS

2 3

Device Information

Enter the Device Name and optional description for this device so you can manage it using the MyDevices Portal.

Device Name: *

My MacBook

Description:

Device ID: 98:E0:D9:7B:A3:F9

Continue

- Cisco Network Setup Assistant installation file will be automatically downloaded. Click the file once download is complete which will launch the installation.



- Click the "Cisco Network Setup Assistant" icon.



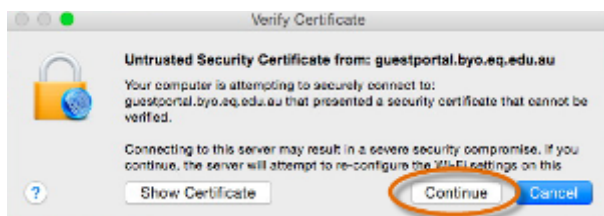
- Select 'Open'.



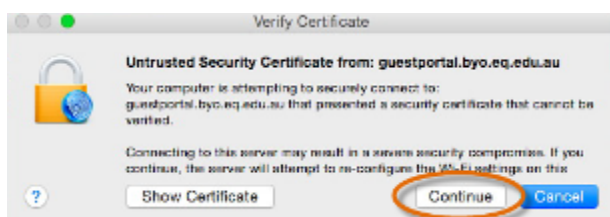
9. Click "Start".



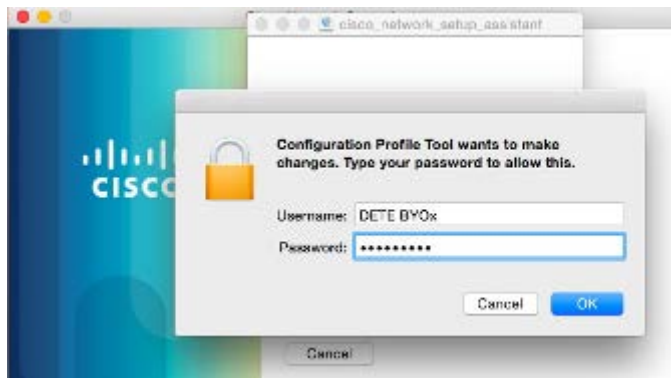
10. Click "Continue" to accept the certificate.



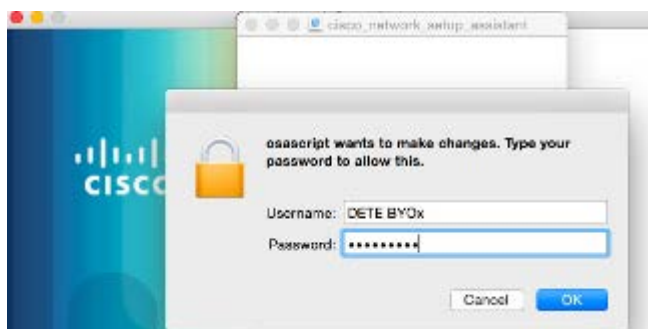
11. Click "Continue" again to accept the second certificate.



12. Enter your personal Mac device Administrator password as required and select "OK".



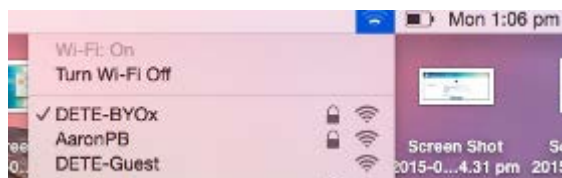
13. Enter your personal Mac device Administrator password again as required and select "OK".



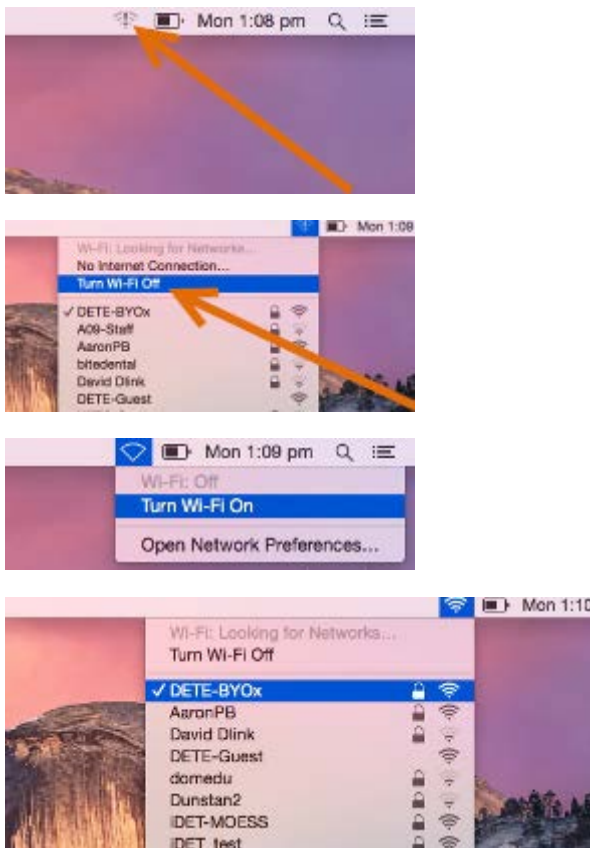
14. Click "Exit".



15. Your MacBook will be connecting to DETE-BYOx network now.



16. If the WiFi icon in menu bar is greyed out with an exclamation mark. Please turn off the WiFi connection and turn it back on. Then make sure your MacBook is connected to DETE-BYOx network.



17. Launch a browser and navigate to any webpage. Enter your DET network username and password when prompted and click "Log in" button.



18. Your onboarding process is complete.